

Reference to previous C.G., N.G. or C.T.

C.T. 18394



No. 18407

FIJI

CERTIFICATE OF TITLE

MATEI HOTELS & INVESTMENTS LIMITED

A duly incorporated Company having its registered office at Suva

pursuant to Application No. 165517 is now the proprietor of an estate in fee simple subject to the provisions and reservations contained in the original Crown Grant No. 105 and subject to such encumbrances as are notified by memorial underwritten or endorsed hereon in ALL THAT piece of land delineated by the plan hereon known as "Matei" (part of) containing

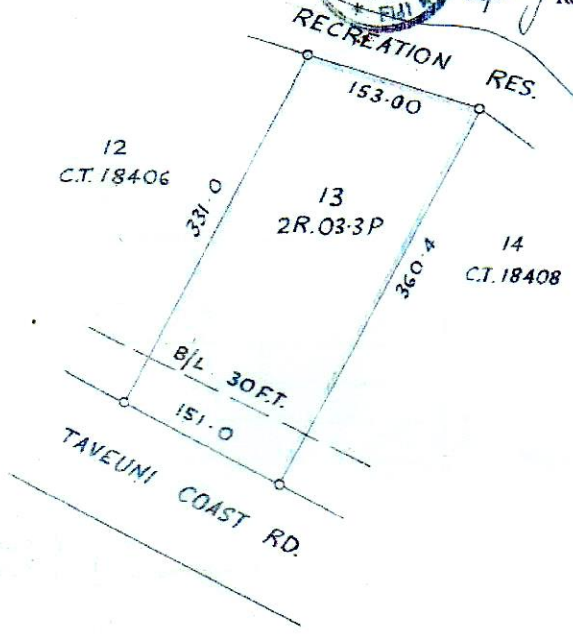
Two roods three perches and three tenths of a perch

be the same a little more or less and being Lot 13 on Deposited Plan No. 4522 and situated in the District of Cakaudrove in the Island of Taveuni

Dated this 12th day of December, One thousand nine hundred and SEVENTY EIGHT



R. Primmer
Deputy Registrar of Titles.



Scale 1 chains per inch. All measurements are in links.

4/CL/977-1,000 (See over)